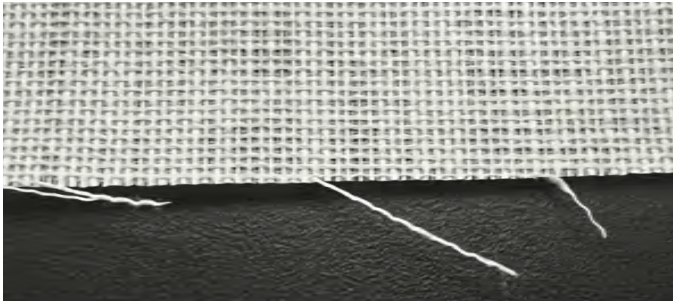


Managing fabric edge fray on Roller Shades

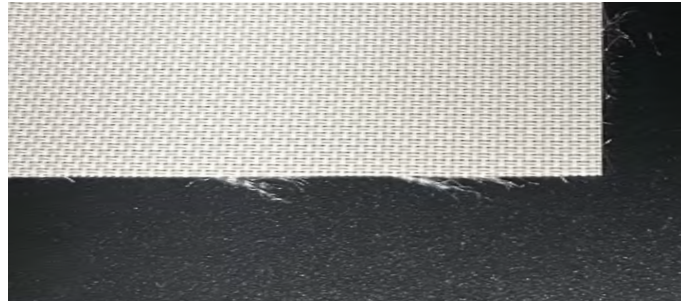
1. What causes edge fraying?

Some polyester and PVC-coated fiberglass fabric threads may display hair-like fibers along the trimmed edge(s) of the shades. While cutting fabrics, some fibers or PVC coated threads may become unfused, and a few strands might remain unsealed exposing the fabric yarns.

These strands have the potential to unravel and may become noticeable over time, this is inherent to some fabrics.



Img. 1 – Polyester frays on the edge of a Roller Shade fabric.



Img. 2 – Fiberglass frays on the edge of a Roller Shade fabric.

2. How do you manage edge fray?

2.1 TRIM THE FRAYED FIBERS

The factory trims any noticeable frays, but there may still be some frays that emerge during shipping, installation, or use of the shade. To deal with any frays that may develop, it is recommended to use a pair of sharp scissors to trim them.

Before you begin trimming the fray, gently fluff the fabric's edge between your fingers to ensure all frays are visible and can be trimmed easily. Be careful not to trim the fabric itself, go slow.



Img. 3 – Polyester fray after being trimmed with sharp scissors.



Img. 4 – Fiberglass fray after being trimmed with sharp scissors.

2.2 DETAIL CUT EDGES

The white fiberglass yarns may remain visible even after trimming, especially on dark fabrics. To help conceal these white fiber ends, you can use a marker in the same colour to gently outline the edge. We recommend art markers, they dry quickly and won't smudge. For most dark-colored fabrics, black, gray, or brown markers work well in blending with the material colour.

If the fabric is two-toned, it's best to choose a marker color that matches the lighter fabric shade.

When using scissors or markers, exercise caution to prevent any damage onto the fabric. It's advisable to conduct a test in an inconspicuous spot first, where any mismatch in color won't be noticeable, such as the initial fabric wrap (roll-up) on the shade tube.

3. How to prevent edge fray?

Frays can also result from the fabric's edge coming into contact with another object. It's important to ensure that the path is free from obstructions before operating a shade.

Additionally, the appearance of fabric frays can be exacerbated by shade telescoping, particularly when the fabric edge rubs against the brackets. Refer to the installation instructions for information on how to address telescoping shades.