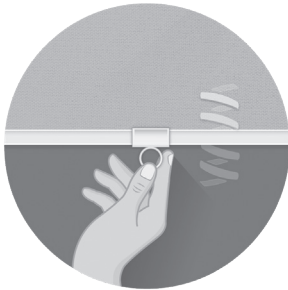


## HOW TO OPERATE

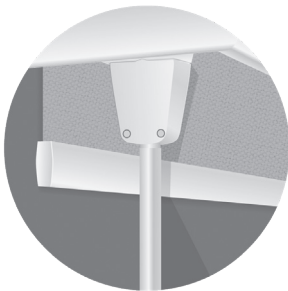
**CAUTION:** Do not lower the shade past the ordered length because damage may occur to the shade.

**SPRINGDRIVE™**

1. To lower your shade, grasp the bottom bar (handle) from the centre-point and gently pull the shade down to desired position.
2. To raise your shade, give a slight pull on bottom bar handle, and the shade will raise automatically in a gradual and controlled motion, stopping at the top.

**TIPS**

- o Do not pull the fabric beyond the ordered height. Pulling fabric beyond your requested height will expose the tube and could potentially damage your shade.
- o To install the **bottom rail handle**, secure the bottom rail with one hand to prevent the shade from moving. With your other hand, slowly and carefully slide the handle to the centre of the bottom rail.
- o Shade **MUST** be operated from the **centre of the bottom rail** to avoid telescoping and damaging the fabric. If applicable, please ensure the bottom rail handle is positioned in the centre of the shade.

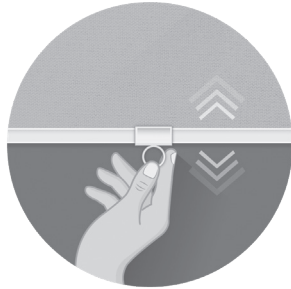
**WANDCONTROL™**

1. To operate your shade, gently pull down on the wand repeatedly until shade reaches desired position.
2. If the shade operates in the opposite direction, securely dock the wand into the housing and twist the handle clockwise or counterclockwise until you hear a click. The click indicates change in direction.

**TIPS**

- o The wand **MUST** be securely docked into the housing unit when not in use.
- o Pump the wand gradually.
- o Avoid pulling the wand to the end of the cord travel. The abrupt stop may damage the mechanism and potentially loosen the mounting screws over time.
- o When installing into drywall, anchors or plugs **MUST** be used.
- o Only twist the wand when docked in the housing unit. Twisting the cords (in an open position) may damage the mechanism.

### HOW TO OPERATE



#### FREEMOTION™ (FASCIA & OPEN ROLL)

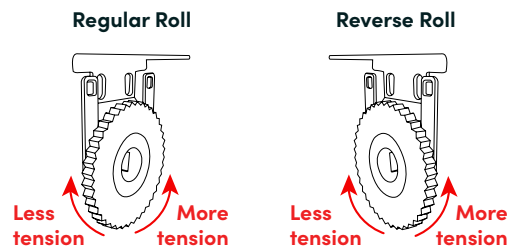
- To lower your shade, grasp the bottom bar (handle) from the centre-point and gently pull the shade down to desired position.
- To raise your shade, using the bottom bar, gently guide the shade up to desired position.

#### TIPS

- Operate the shade gradually and evenly, do not quickly force the shade up or down.
- Shade **MUST** be operated from the **centre of the bottom rail** to avoid telescoping and damaging the fabric. If applicable, please ensure the bottom rail handle is positioned in the centre of the shade.
- For High-Lite Shades, pull the bottom rail straight down ensuring it is not tilted forward. Rotating the bottom rail may cause the fabric to cinch or get damaged.
- For High-Lite shades wider than 60" you **SHOULD ALWAYS** operate the shade with two hands to support the bottom rail and ensure fabric isn't creased or cinched.

#### Tension Adjustment

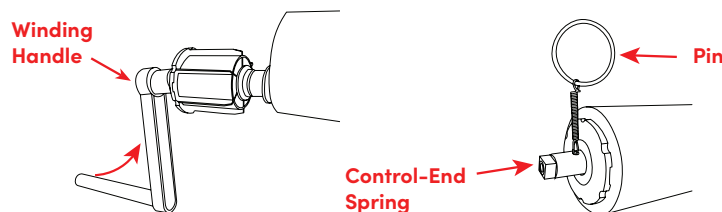
- \*Tension can be adjusted by rotating the dial located on left side of shade (right side for **reverse roll**).
- If shade is raising on its own, **loosen** the tension by turning the dial **clockwise**.
  - If shade is lowering on its own, **increase** tension by turning the dial **counter-clockwise**.



Shade Width	# of Rotations
Up to 17"	16
18" - 24"	20
25" - 48"	18
49" - 60"	20
61" - 72"	15
73" - 84"	12
85" - 96"	15
Wider than 96"	Contact customer service

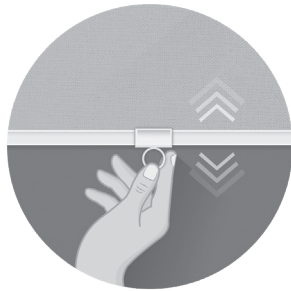
If pin is released prior to control-end installation, spring will release all tension making the shade inoperable. Tension can be rebuilt by rotating the control end (left side) with the winding handle.

- Pull the control-end out of the tube by 3".
- Place the winding handle on the end of the control-end.
- Turn the handle. Estimated number of rotations needed can be found in the chart on the left.
- Remove the handle.
- WITHOUT PUSHING THE CONTROL-END SPRING, insert the pin provided in through the small hole on the control-end.
- Put the control-end back in the tube.
- Follow installation instructions to install your shade.



- After installation slight adjustments may be necessary. Follow the steps under tension adjustment.

## HOW TO OPERATE



## FREEMOTION™ (SL102 &amp; CASSETTES)

1. To lower your shade, grasp the bottom bar (handle) from the centre-point and gently pull the shade down to desired position.
2. To raise your shade, using the bottom bar, gently guide the shade up to desired position.

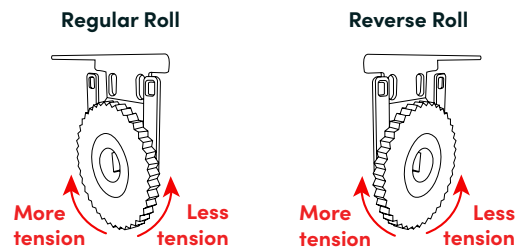
## TIPS

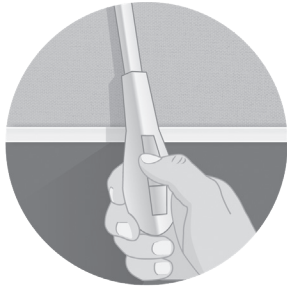
- o Operate the shade gradually and evenly, do not quickly force the shade up or down.
- o Shade **MUST** be operated from the **centre of the bottom rail** to avoid telescoping and damaging the fabric. If applicable, please ensure the bottom rail handle is positioned in the centre of the shade.
- o For High-Lite Shades, pull the bottom rail straight down ensuring it is not tilted forward. Rotating the bottom rail may cause the fabric to cinch or get damaged.
- o For High-Lite shades wider than 60" you **SHOULD ALWAYS** operate the shade with two hands to support the bottom rail and ensure fabric isn't creased or cinched.

## Tension Adjustment

- If shade is raising on its own, **loosen** the tension by turning the dial **counter-clockwise**.
- If shade is lowering on its own, **increase** tension by turning the dial **clockwise**.

## SL102 HEADRAIL &amp; V-80 CASSETTE





## E-TOUCH™ BY ROLLEASE

**NOTE:** Your motor comes in continuous mode. For High-Lite and Sheer Horizontal, you may switch to stepping mode by pressing and holding the P1 and STOP buttons for 2 seconds. The motor will jog 1x in response.

### 1. Program from Factory Mode

- press and hold the P1 button until the shade jogs 1x, and immediately press and hold the STOP button until the shade jogs 1x.
- Check motor direction. If correct, proceed to step 3. If incorrect, hold the STOP button until blind jogs 1x.

### 2. Set upper limit

- Bring shade to desired upper limit by short pressing the UP button for incremental movement, or long pressing for continuous movement.
- Press and hold the STOP and UP buttons until the shade jogs 2x. Limit is set.

### 3. Set lower limit

- bring shade to desired lower limit by short pressing the DOWN button for incremental movement, or long pressing for continuous movement.
- Press and hold the STOP and DOWN buttons until the shade jogs 2x. Limit is set.

### 4. Set Favourite Stop Position:

- Move the shade to desired middle stop position.
  - Press and hold the STOP button for 2 seconds until motor jog 2x.
  - To change favourite stop position, repeat steps a & b. Only one favourite position is allowed .
- \* Adjustment of upper or lower limits will delete favourite position, which will need to be reset.

5. When stationary, STOP button can be used to move shade to a favourite stop position.

### 6. Adjust Upper Limit

- Make sure shade is not sitting at the maximum height possible.
- Press and hold UP & STOP buttons for 6 seconds until motor jogs 1x. Upper limit is now clear.
- Raise shade to desired position. Hold STOP & UP buttons for two seconds, motor will jog 2x. Limit is set.

### 7. Adjust Lower Limit

- Make sure shade is not sitting at the lowest height possible.
- Press and hold DOWN & STOP buttons for 6 seconds until motor jogs 1x. Lower limit is now clear.
- Lower shade to desired position. Hold STOP & DOWN buttons for 2 seconds, motor will jog 2x. Limit is set

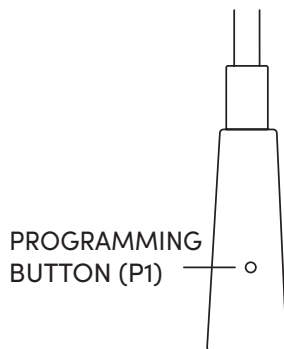
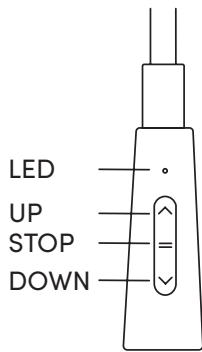
### 8. To Operate

#### • For Continuous Mode:

- Press UP button to raise shade. Shade will automatically stop when it reaches the upper limit.
- Press DOWN button to lower shade. Shade will automatically stop when it reaches the lower limit.
- Press STOP to stop your shade while in motion.

#### • For Continuous Mode:

- Tap UP button to move the shade up in small increments. Hold UP button for 2 sec. to automatically raise shade.
- Tap DOWN button to move the shade down in small increments. Hold DOWN button for 2 sec. to automatically lower shade.
- Press STOP to stop your shade while in motion.



## TIPS

- o E-Touch™ by Rollease can be charged with any USB-C to USB cable and DC 5V 2A charging cube. Do not disconnect the wand from the motor when charging.
- o Motor will take 7 hours to fully charge.